

**SPECIFICATION OF BUILDING**

1. TO BE CONSTRUCTED IN ACCORDANCE WITH THE SPECIFICATIONS MENTIONED HEREIN.
2. TO BE CONSTRUCTED IN ACCORDANCE WITH THE SPECIFICATIONS MENTIONED HEREIN.
3. TO BE CONSTRUCTED IN ACCORDANCE WITH THE SPECIFICATIONS MENTIONED HEREIN.
4. TO BE CONSTRUCTED IN ACCORDANCE WITH THE SPECIFICATIONS MENTIONED HEREIN.
5. TO BE CONSTRUCTED IN ACCORDANCE WITH THE SPECIFICATIONS MENTIONED HEREIN.
6. TO BE CONSTRUCTED IN ACCORDANCE WITH THE SPECIFICATIONS MENTIONED HEREIN.
7. TO BE CONSTRUCTED IN ACCORDANCE WITH THE SPECIFICATIONS MENTIONED HEREIN.
8. TO BE CONSTRUCTED IN ACCORDANCE WITH THE SPECIFICATIONS MENTIONED HEREIN.
9. TO BE CONSTRUCTED IN ACCORDANCE WITH THE SPECIFICATIONS MENTIONED HEREIN.
10. TO BE CONSTRUCTED IN ACCORDANCE WITH THE SPECIFICATIONS MENTIONED HEREIN.
11. TO BE CONSTRUCTED IN ACCORDANCE WITH THE SPECIFICATIONS MENTIONED HEREIN.
12. TO BE CONSTRUCTED IN ACCORDANCE WITH THE SPECIFICATIONS MENTIONED HEREIN.
13. TO BE CONSTRUCTED IN ACCORDANCE WITH THE SPECIFICATIONS MENTIONED HEREIN.
14. TO BE CONSTRUCTED IN ACCORDANCE WITH THE SPECIFICATIONS MENTIONED HEREIN.
15. TO BE CONSTRUCTED IN ACCORDANCE WITH THE SPECIFICATIONS MENTIONED HEREIN.
16. TO BE CONSTRUCTED IN ACCORDANCE WITH THE SPECIFICATIONS MENTIONED HEREIN.
17. TO BE CONSTRUCTED IN ACCORDANCE WITH THE SPECIFICATIONS MENTIONED HEREIN.
18. TO BE CONSTRUCTED IN ACCORDANCE WITH THE SPECIFICATIONS MENTIONED HEREIN.
19. TO BE CONSTRUCTED IN ACCORDANCE WITH THE SPECIFICATIONS MENTIONED HEREIN.
20. TO BE CONSTRUCTED IN ACCORDANCE WITH THE SPECIFICATIONS MENTIONED HEREIN.
21. TO BE CONSTRUCTED IN ACCORDANCE WITH THE SPECIFICATIONS MENTIONED HEREIN.
22. TO BE CONSTRUCTED IN ACCORDANCE WITH THE SPECIFICATIONS MENTIONED HEREIN.
23. TO BE CONSTRUCTED IN ACCORDANCE WITH THE SPECIFICATIONS MENTIONED HEREIN.
24. TO BE CONSTRUCTED IN ACCORDANCE WITH THE SPECIFICATIONS MENTIONED HEREIN.
25. TO BE CONSTRUCTED IN ACCORDANCE WITH THE SPECIFICATIONS MENTIONED HEREIN.
26. TO BE CONSTRUCTED IN ACCORDANCE WITH THE SPECIFICATIONS MENTIONED HEREIN.
27. TO BE CONSTRUCTED IN ACCORDANCE WITH THE SPECIFICATIONS MENTIONED HEREIN.
28. TO BE CONSTRUCTED IN ACCORDANCE WITH THE SPECIFICATIONS MENTIONED HEREIN.
29. TO BE CONSTRUCTED IN ACCORDANCE WITH THE SPECIFICATIONS MENTIONED HEREIN.
30. TO BE CONSTRUCTED IN ACCORDANCE WITH THE SPECIFICATIONS MENTIONED HEREIN.
31. TO BE CONSTRUCTED IN ACCORDANCE WITH THE SPECIFICATIONS MENTIONED HEREIN.
32. TO BE CONSTRUCTED IN ACCORDANCE WITH THE SPECIFICATIONS MENTIONED HEREIN.
33. TO BE CONSTRUCTED IN ACCORDANCE WITH THE SPECIFICATIONS MENTIONED HEREIN.
34. TO BE CONSTRUCTED IN ACCORDANCE WITH THE SPECIFICATIONS MENTIONED HEREIN.
35. TO BE CONSTRUCTED IN ACCORDANCE WITH THE SPECIFICATIONS MENTIONED HEREIN.
36. TO BE CONSTRUCTED IN ACCORDANCE WITH THE SPECIFICATIONS MENTIONED HEREIN.
37. TO BE CONSTRUCTED IN ACCORDANCE WITH THE SPECIFICATIONS MENTIONED HEREIN.
38. TO BE CONSTRUCTED IN ACCORDANCE WITH THE SPECIFICATIONS MENTIONED HEREIN.
39. TO BE CONSTRUCTED IN ACCORDANCE WITH THE SPECIFICATIONS MENTIONED HEREIN.
40. TO BE CONSTRUCTED IN ACCORDANCE WITH THE SPECIFICATIONS MENTIONED HEREIN.
41. TO BE CONSTRUCTED IN ACCORDANCE WITH THE SPECIFICATIONS MENTIONED HEREIN.
42. TO BE CONSTRUCTED IN ACCORDANCE WITH THE SPECIFICATIONS MENTIONED HEREIN.
43. TO BE CONSTRUCTED IN ACCORDANCE WITH THE SPECIFICATIONS MENTIONED HEREIN.
44. TO BE CONSTRUCTED IN ACCORDANCE WITH THE SPECIFICATIONS MENTIONED HEREIN.
45. TO BE CONSTRUCTED IN ACCORDANCE WITH THE SPECIFICATIONS MENTIONED HEREIN.
46. TO BE CONSTRUCTED IN ACCORDANCE WITH THE SPECIFICATIONS MENTIONED HEREIN.
47. TO BE CONSTRUCTED IN ACCORDANCE WITH THE SPECIFICATIONS MENTIONED HEREIN.
48. TO BE CONSTRUCTED IN ACCORDANCE WITH THE SPECIFICATIONS MENTIONED HEREIN.
49. TO BE CONSTRUCTED IN ACCORDANCE WITH THE SPECIFICATIONS MENTIONED HEREIN.
50. TO BE CONSTRUCTED IN ACCORDANCE WITH THE SPECIFICATIONS MENTIONED HEREIN.

**SCHEDULE OF DOORS & WINDOWS**

TYPE	NO.	AREA	NO.	AREA	NO.	AREA
1	100	100	100	100	100	100
2	100	100	100	100	100	100
3	100	100	100	100	100	100
4	100	100	100	100	100	100
5	100	100	100	100	100	100
6	100	100	100	100	100	100
7	100	100	100	100	100	100
8	100	100	100	100	100	100
9	100	100	100	100	100	100
10	100	100	100	100	100	100
11	100	100	100	100	100	100
12	100	100	100	100	100	100
13	100	100	100	100	100	100
14	100	100	100	100	100	100
15	100	100	100	100	100	100
16	100	100	100	100	100	100
17	100	100	100	100	100	100
18	100	100	100	100	100	100
19	100	100	100	100	100	100
20	100	100	100	100	100	100
21	100	100	100	100	100	100
22	100	100	100	100	100	100
23	100	100	100	100	100	100
24	100	100	100	100	100	100
25	100	100	100	100	100	100
26	100	100	100	100	100	100
27	100	100	100	100	100	100
28	100	100	100	100	100	100
29	100	100	100	100	100	100
30	100	100	100	100	100	100
31	100	100	100	100	100	100
32	100	100	100	100	100	100
33	100	100	100	100	100	100
34	100	100	100	100	100	100
35	100	100	100	100	100	100
36	100	100	100	100	100	100
37	100	100	100	100	100	100
38	100	100	100	100	100	100
39	100	100	100	100	100	100
40	100	100	100	100	100	100
41	100	100	100	100	100	100
42	100	100	100	100	100	100
43	100	100	100	100	100	100
44	100	100	100	100	100	100
45	100	100	100	100	100	100
46	100	100	100	100	100	100
47	100	100	100	100	100	100
48	100	100	100	100	100	100
49	100	100	100	100	100	100
50	100	100	100	100	100	100

1. HANCOCK PVT. LTD.
2. HANCOCK PVT. LTD.
3. HANCOCK PVT. LTD.
4. HANCOCK PVT. LTD.
5. HANCOCK PVT. LTD.
6. HANCOCK PVT. LTD.
7. HANCOCK PVT. LTD.
8. HANCOCK PVT. LTD.
9. HANCOCK PVT. LTD.
10. HANCOCK PVT. LTD.
11. HANCOCK PVT. LTD.
12. HANCOCK PVT. LTD.
13. HANCOCK PVT. LTD.
14. HANCOCK PVT. LTD.
15. HANCOCK PVT. LTD.
16. HANCOCK PVT. LTD.
17. HANCOCK PVT. LTD.
18. HANCOCK PVT. LTD.
19. HANCOCK PVT. LTD.
20. HANCOCK PVT. LTD.
21. HANCOCK PVT. LTD.
22. HANCOCK PVT. LTD.
23. HANCOCK PVT. LTD.
24. HANCOCK PVT. LTD.
25. HANCOCK PVT. LTD.
26. HANCOCK PVT. LTD.
27. HANCOCK PVT. LTD.
28. HANCOCK PVT. LTD.
29. HANCOCK PVT. LTD.
30. HANCOCK PVT. LTD.
31. HANCOCK PVT. LTD.
32. HANCOCK PVT. LTD.
33. HANCOCK PVT. LTD.
34. HANCOCK PVT. LTD.
35. HANCOCK PVT. LTD.
36. HANCOCK PVT. LTD.
37. HANCOCK PVT. LTD.
38. HANCOCK PVT. LTD.
39. HANCOCK PVT. LTD.
40. HANCOCK PVT. LTD.
41. HANCOCK PVT. LTD.
42. HANCOCK PVT. LTD.
43. HANCOCK PVT. LTD.
44. HANCOCK PVT. LTD.
45. HANCOCK PVT. LTD.
46. HANCOCK PVT. LTD.
47. HANCOCK PVT. LTD.
48. HANCOCK PVT. LTD.
49. HANCOCK PVT. LTD.
50. HANCOCK PVT. LTD.

**SIGNATURE OF OWNERS**

*[Signature]*

**CERTIFICATE OF STRUCTURAL STABILITY**

THE UNDERSIGNED HAS EXAMINED THE STRUCTURAL DESIGN AND DRAWINGS OF THE ABOVE PROJECT AND IS OF THE OPINION THAT THE SAME ARE IN ACCORDANCE WITH THE REQUIREMENTS OF THE APPLICABLE CODES AND STANDARDS AND IS SATISFIED THAT THE STRUCTURE WILL BE ABLE TO RESIST ALL THE LOADS AND STRESSES TO WHICH IT WILL BE SUBJECTED DURING ITS USEFUL LIFE.

**SIGNATURE OF E.I.A.**

*[Signature]*

**SIGNATURE OF STRUCTURAL ENGINEER**

*[Signature]*

**SIGNATURE OF E.I.A.**

*[Signature]*

**SIGNATURE OF STRUCTURAL ENGINEER**

*[Signature]*

**SIGNATURE OF ARCHITECT**

*[Signature]*

**PROJECT**

PLAN OF PROPOSED G+RI (36.4 M. HT.) STORED RESIDENTIAL BUILDING AT MOTDA-SUCHAR, J. I. NO.-8, TOLUJ NO.-156, R. S. ROAD NO.-3768, 3769, 3769/3819, 3764, 3765, 3766, 3767, 3768, 3769, 3770, 3771, 3772, 3773, 3774, 3775, 3776, 3777, 3778, 3779, 3780, 3781, 3782, 3783, 3784, 3785, 3786, 3787, 3788, 3789, 3790, 3791, 3792, 3793, 3794, 3795, 3796, 3797, 3798, 3799, 3800, 3801, 3802, 3803, 3804, 3805, 3806, 3807, 3808, 3809, 3810, 3811, 3812, 3813, 3814, 3815, 3816, 3817, 3818, 3819, 3820, 3821, 3822, 3823, 3824, 3825, 3826, 3827, 3828, 3829, 3830, 3831, 3832, 3833, 3834, 3835, 3836, 3837, 3838, 3839, 3840, 3841, 3842, 3843, 3844, 3845, 3846, 3847, 3848, 3849, 3850, 3851, 3852, 3853, 3854, 3855, 3856, 3857, 3858, 3859, 3860, 3861, 3862, 3863, 3864, 3865, 3866, 3867, 3868, 3869, 3870, 3871, 3872, 3873, 3874, 3875, 3876, 3877, 3878, 3879, 3880, 3881, 3882, 3883, 3884, 3885, 3886, 3887, 3888, 3889, 3890, 3891, 3892, 3893, 3894, 3895, 3896, 3897, 3898, 3899, 3900, 3901, 3902, 3903, 3904, 3905, 3906, 3907, 3908, 3909, 3910, 3911, 3912, 3913, 3914, 3915, 3916, 3917, 3918, 3919, 3920, 3921, 3922, 3923, 3924, 3925, 3926, 3927, 3928, 3929, 3930, 3931, 3932, 3933, 3934, 3935, 3936, 3937, 3938, 3939, 3940, 3941, 3942, 3943, 3944, 3945, 3946, 3947, 3948, 3949, 3950, 3951, 3952, 3953, 3954, 3955, 3956, 3957, 3958, 3959, 3960, 3961, 3962, 3963, 3964, 3965, 3966, 3967, 3968, 3969, 3970, 3971, 3972, 3973, 3974, 3975, 3976, 3977, 3978, 3979, 3980, 3981, 3982, 3983, 3984, 3985, 3986, 3987, 3988, 3989, 3990, 3991, 3992, 3993, 3994, 3995, 3996, 3997, 3998, 3999, 4000.

**SCALE**

1:100

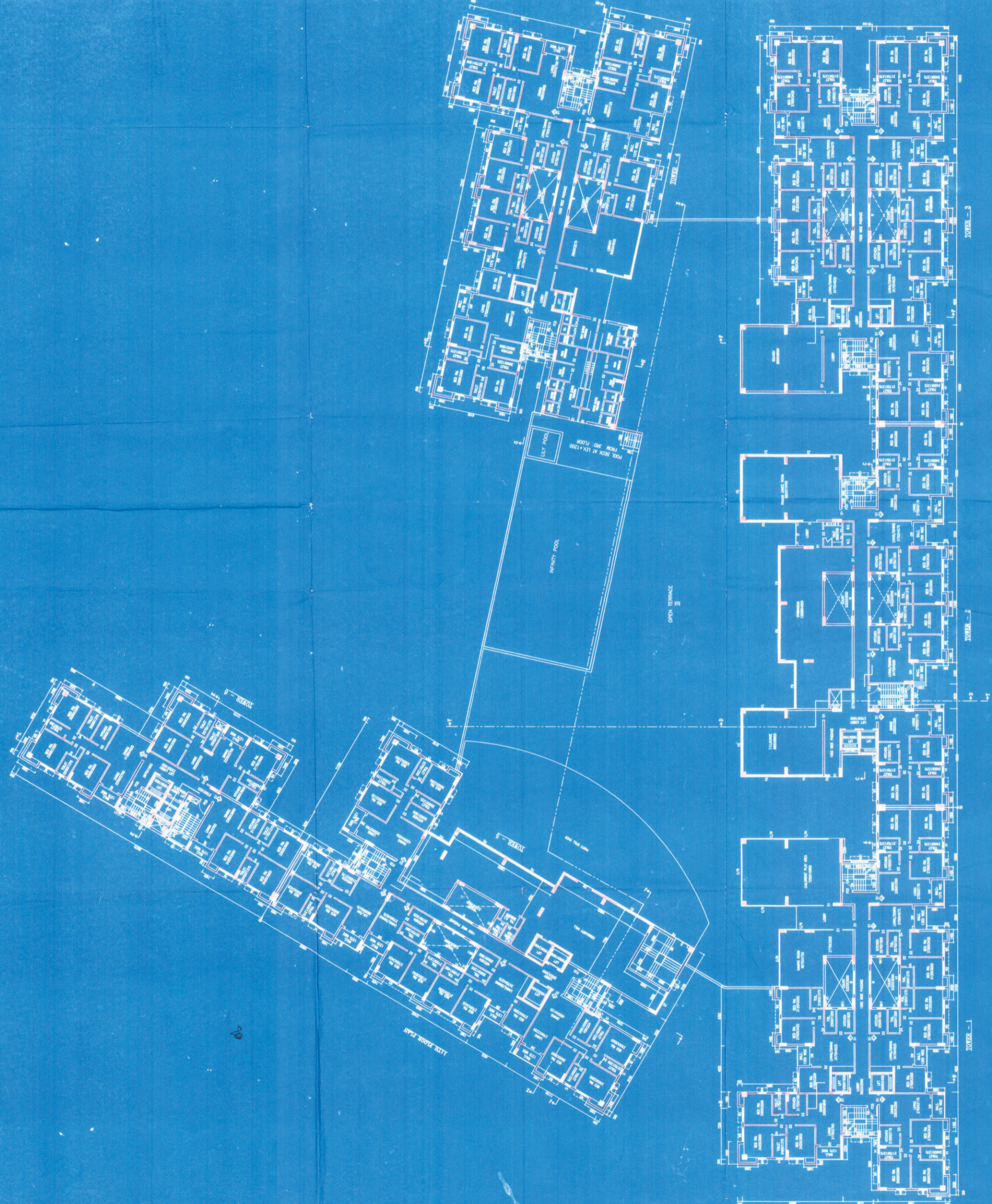
**ARCHITECTS**

RAJ KUMAR AGRAWAL

88, ROYD STREET, KOLKATA-16.

**TITLE**

3RD FLOOR PLAN



3RD FLOOR PLAN

406  
08 SEP 2015  
This is to certify that the above mentioned work has been sanctioned for execution by the Pannath Municipality on 08/09/2015. The estimated cost of the work is Rs. 10,00,000/- (Ten Lakhs only). The work is to be completed within a period of 12 months from the date of sanction. The contractor is to submit a performance bond of Rs. 10,00,000/- (Ten Lakhs only) to the Municipality before the commencement of the work. The contractor is also to submit a copy of the sanctioned work order to the Pannath Municipality for their records.

*[Signature]*  
Sub-Engineer  
Pannath Municipality

*[Signature]*  
Asst. Engineer  
Pannath Municipality

SANCTIONED  
/ CHAKRAN 08 SEP 2015  
PANNATH MUNICIPALITY

*[Signature]*  
Asst. Chief Engineer  
Dept. of Technical Affairs  
Govt. of Kerala

*[Signature]*  
Superintending Engineer, Civil Works  
Municipal Engineering Department  
Govt. of Kerala

T-1  
08/09/15